



# BACKPACK VIBRATOR

## INSTRUCTION MANUAL

SAFETY, ASSEMBLY, AND MAINTENANCE INSTRUCTIONS FOR MODELS:

---

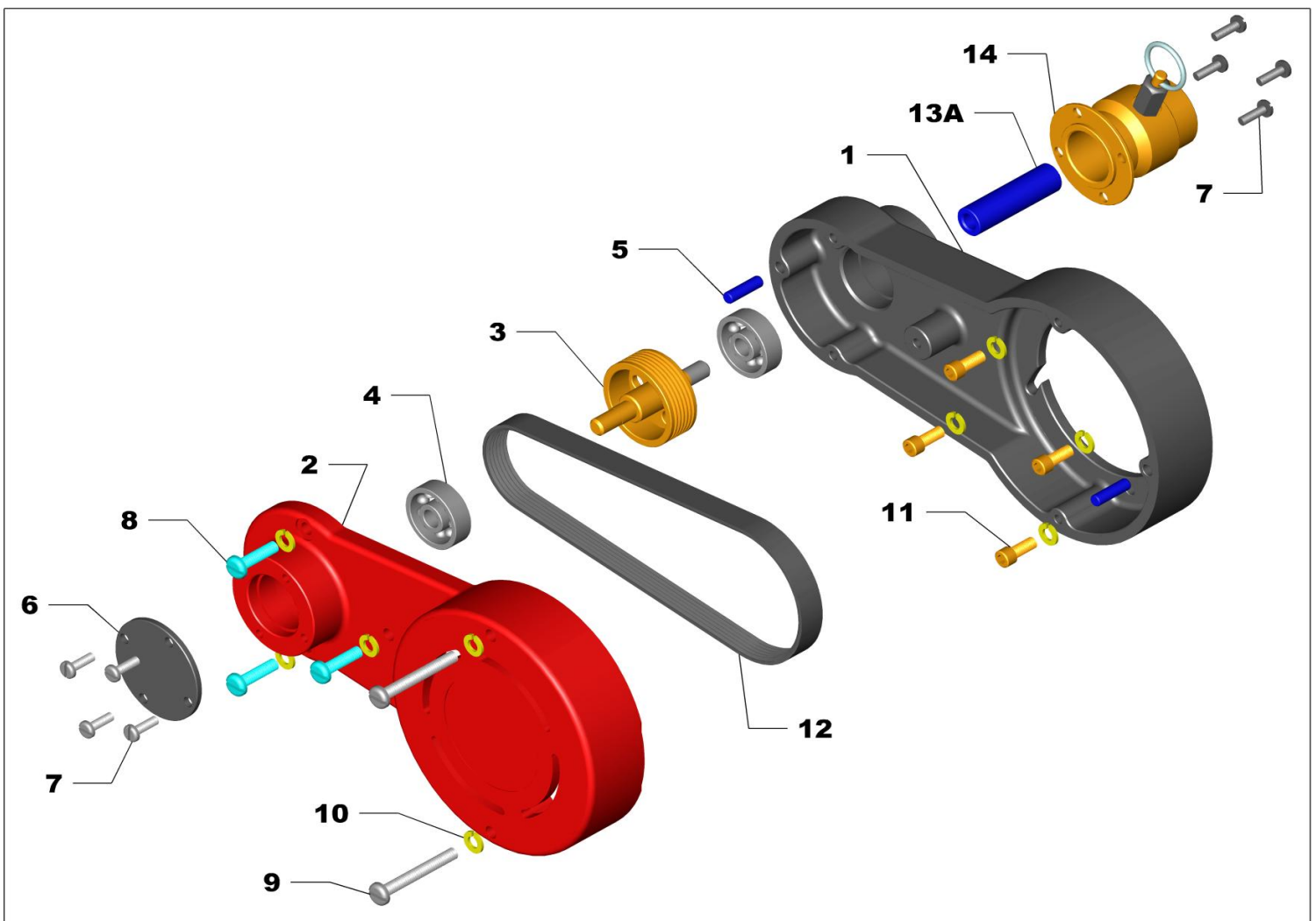
**Model: Pro 50-4S**

---



# TRANSMISSION

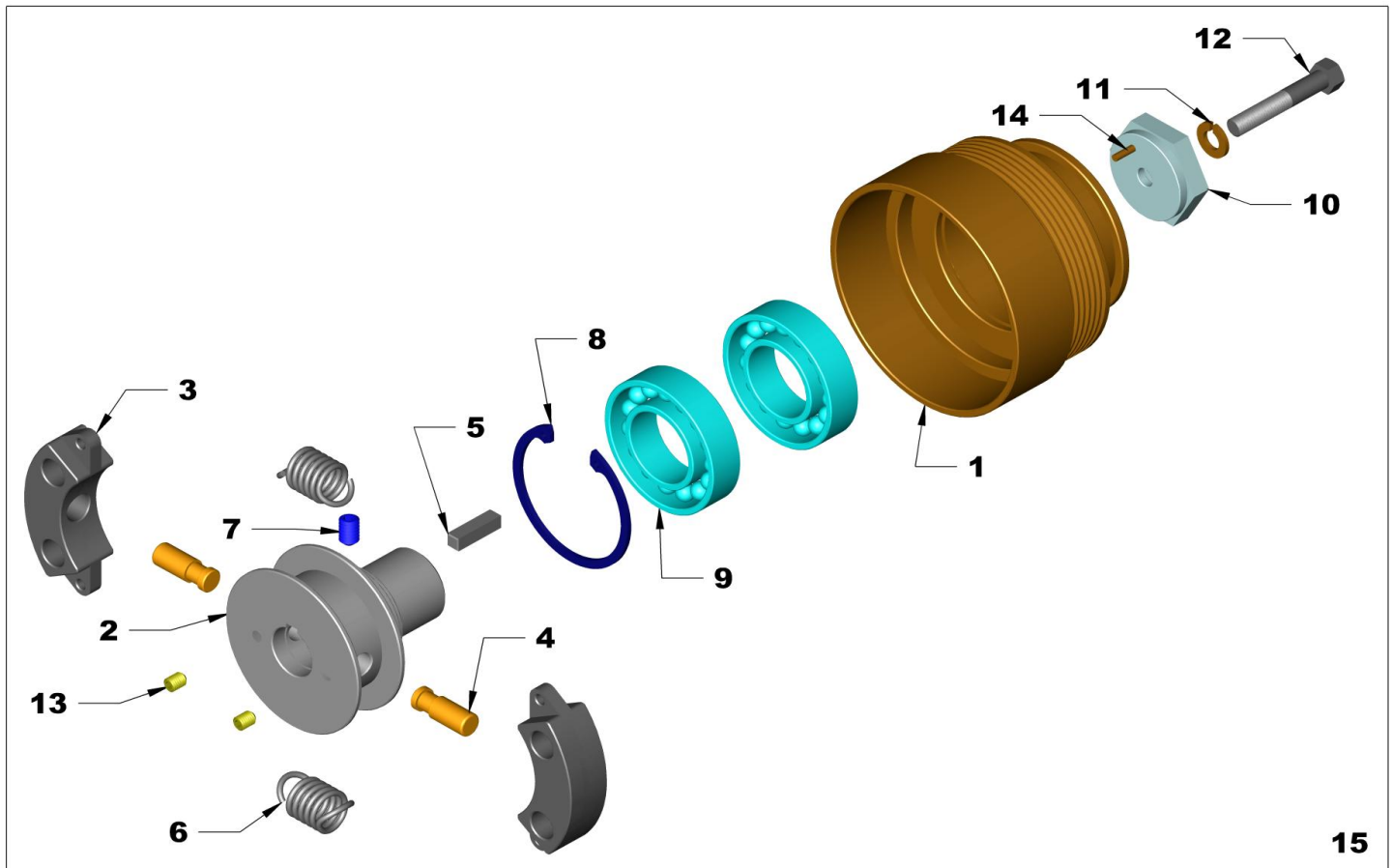
Ref.	Part No.	DESCRIPTION	QTY
1	635A1	TRANSMISSION BOX	1
2	635B1	TRANSMISSION BOX COVER	1
3	295N1	DRIVEN PULLEY	1
4	140C300	BEARING, DOUBLE SEALED	2
5	180G87	DOWEL PIN	2
6	215M1	END CAP	1
7	190F150	SCREW	8
8	190F208	SCREW	3
9	190F220	SCREW	2
10	285A250	LOCK WASHER	9
11	320B206	SOCKET CAP SCREW	4
12	390B1	MICRO V BELT	1
13A	160CW1	L.H. DRIVE CORE ADAPTER	1
13B	160CW2 (not shown)	R.H. DRIVE CORE ADAPTER	1
14	150DE1	CASING ADAPTER	1



**NOTE: OTHER STYLES AVAILABLE UPON REQUEST.**

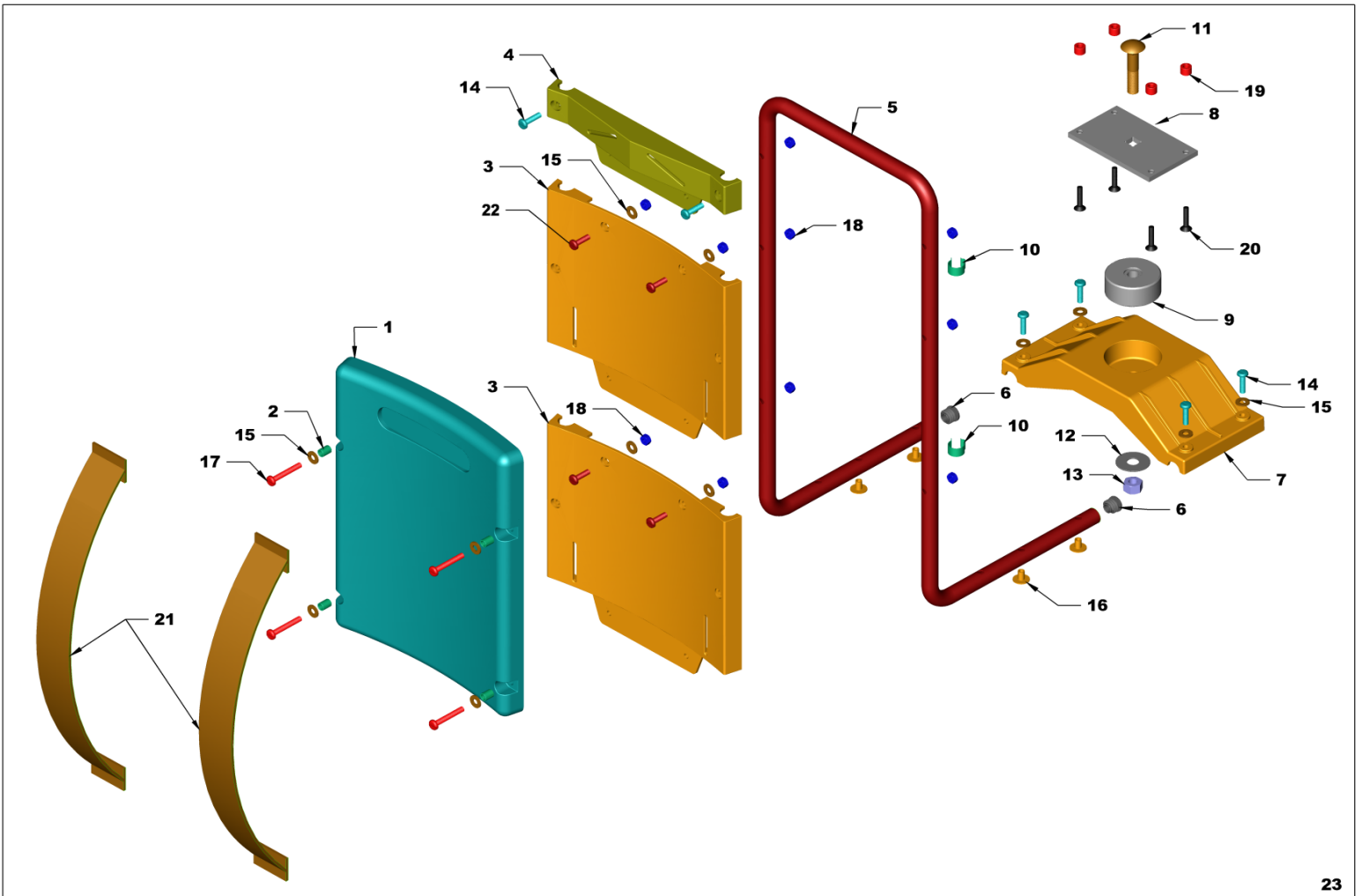
# CLUTCH ASSEMBLY

Ref.	Part No.	DESCRIPTION	QTY
1	295P1	PULLEY, CLUTCH DRUM	1
2	630A1	CLUTCH ADAPTER	1
3	625A1	CLUTCH SHOE	2
4	180F308	DOWEL PIN	2
5	575D75	KEY	1
6	465D1	CLUTCH SPRING	2
7	320A203	SET SCREW	1
8	255F1	RETAINING RING	1
9	140D005	BEARING, DOUBLE SHIELDED	2
10	370D1	WASHER	1
11	285A250	LOCK WASHER	1
12	280B150	SCREW	1
13	190B125	SET SCREW	2
14	180A1	SPRING PIN	1
15	25BA1	COMPLETE CLUTCH ASSEMBLY	1



# FRAME

Ref.	Part No.	Description	Qty.
1	445B1	PAD	1
2	200AP1	BOLT LINER	4
3	215BW1	PANEL	2
4	215BY1	TOP PANEL	1
5	440S1	FRAME	1
6	400D1	END CAPS	2
7	215CA1	ENGINE MOUNT	1
8	215BR1	ENGINE MOUNTING PLATE	1
9	200AH1	SPACER, ENGINE	1
10	467A1	THROTTLE CABLE CLIP	2
11	190K250	CARRIAGE BOLT	1
12	370E50	WASHER	1
13	210D50	NYLOC NUT	1
14	190F212	SCREW	6
15	370A250	WASHER	12
16	211D25	WELD NUT	4
17	190F217	SCREW	4
18	211B250	NYLOC NUT	10
19	200AJ1	STAND-OFFS ENGINE PLATE	4
20	190J30	SCREW ENGINE MOUNT	4
21	525B1	SHOULDER STRAPS	2
22	190F210	SCREW	4
23	440V1	COMPLETE FRAME ASSEMBLY	1



# THROTTLE ASSEMBLY

Ref.	Part No.	Description	Qty.
1	440T1	THROTTLE BRACKET	1
2	190F217	SCREW	2
3	285A250	LOCK WASHER	2
4	211D25	WELD NUT	2
5	190F217	SCREW	1
6	400D1	END CAPS	2
7	467A1	THROTTLE CABLE CLIP	1
8	605E1	THROTTLE CONTROL ASSEMBLY	1
9	165H1	COMPLETE THROTTLE ASSEMBLY	1

